

GOVERNANCE OF THE ABROLHOS BANK

Conservation and Economy

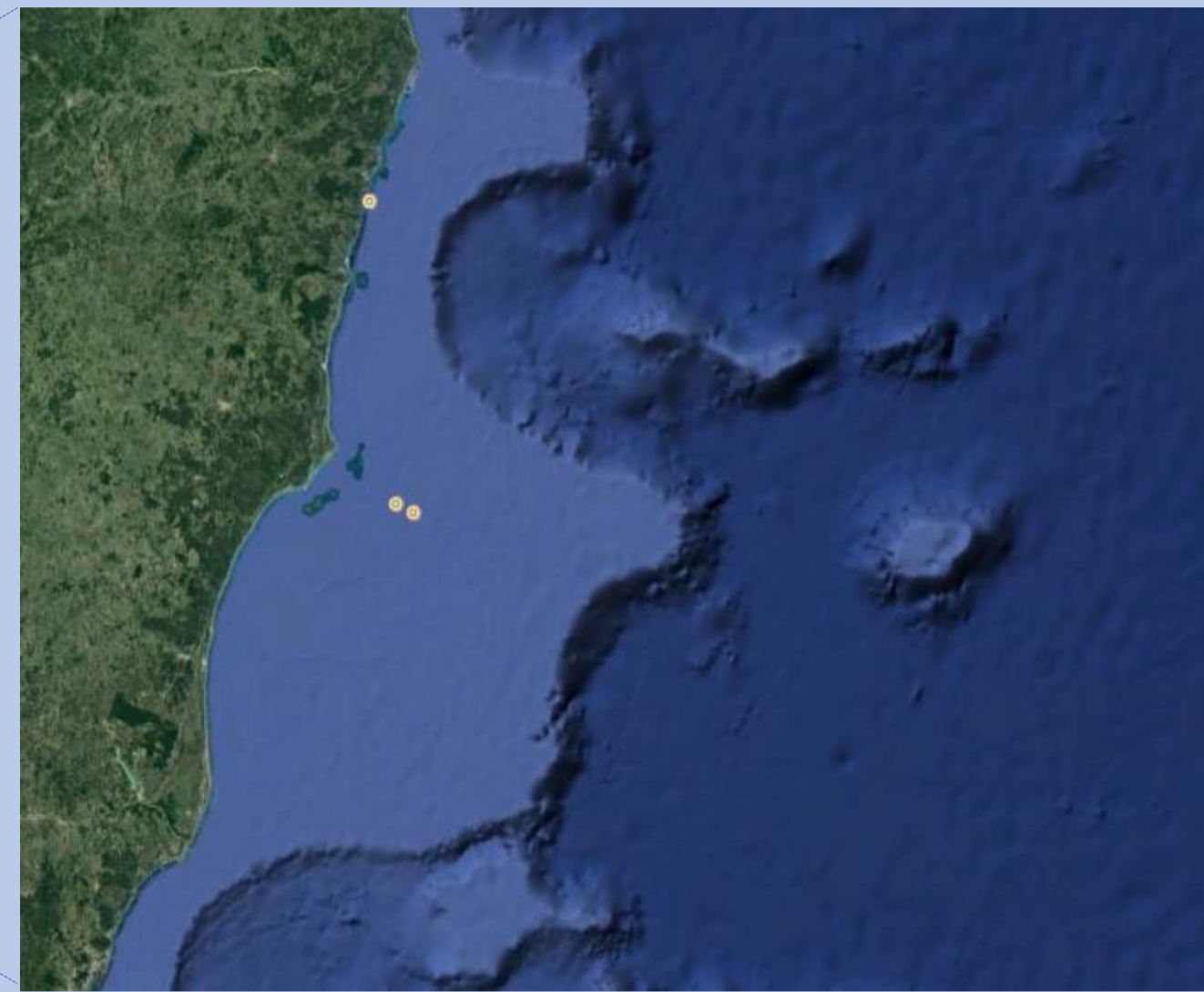
Pedro Henrique Dias Marques

Program of Science and Environmental Technology

Milton Santos Observatory in the Extreme South of Bahia (OBMS)

pedro.ufmg.dias@gmail.com

ABROLHOS BANK



The Abrolhos Bank region is the reef complex that concentrates the greatest biodiversity in the South Atlantic

Presence of endemic species

Threatened Species

MARINE PROTECTED AREAS



8 MPAs

= 6456 km²

MPAs cover about

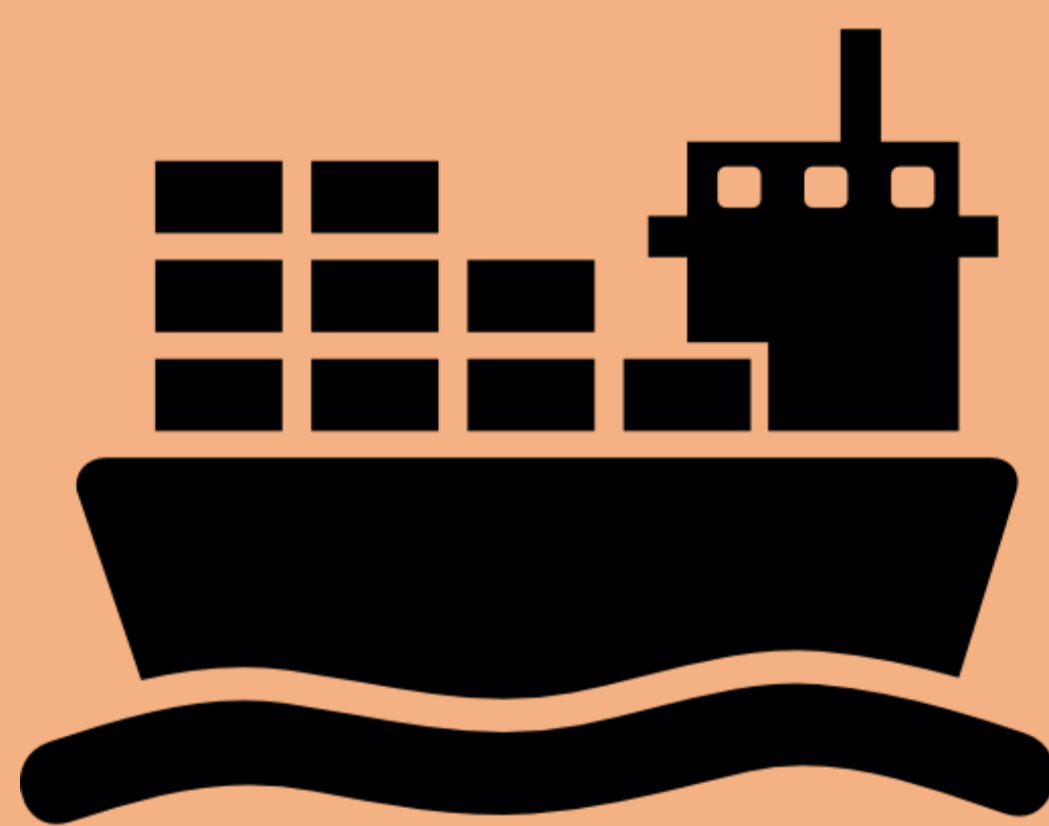
→ **13%** of the Abrolhos Bank marine waters

STAKEHOLDERS



6000

Artisanal Fishermen



Naval Transports



Eco Tourism



Mining Oil and Gas Industries

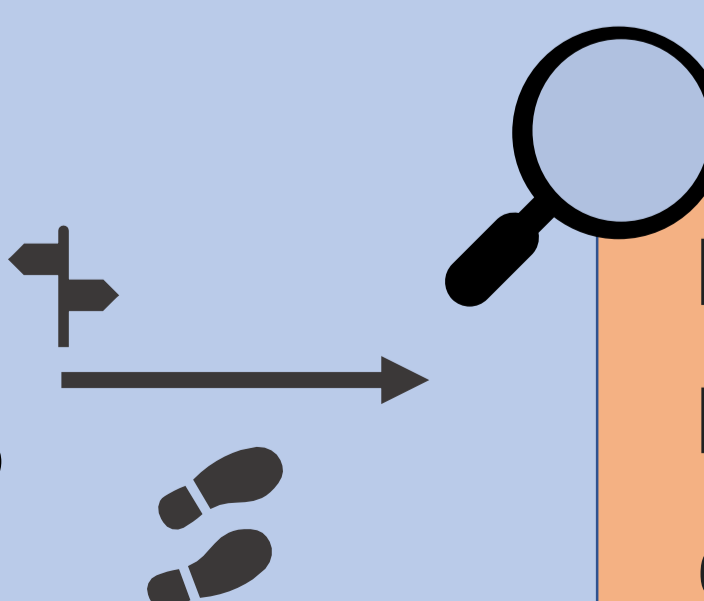
The Brazilian government is looking forward the **expansion** of the Abrolhos National Marine Park, but this would reduce the income of **2000** families of artisanal fishermen



The artisanal fishermen are proposing the expansion of the Cassurabá Extractivist Reserve (RESEX), in order to increase the protection of biodiversity and the sustainable management of fisheries



NEXT STEPS



Participatory mapping of potential areas for the expansion of RESEX

