

Gabriela Chiquito Gesualdo <sup>1</sup>, Paulo Tarso Sanches de Oliveira <sup>1</sup>, Dulce Buchala Bicca Rodrigues <sup>1</sup>.

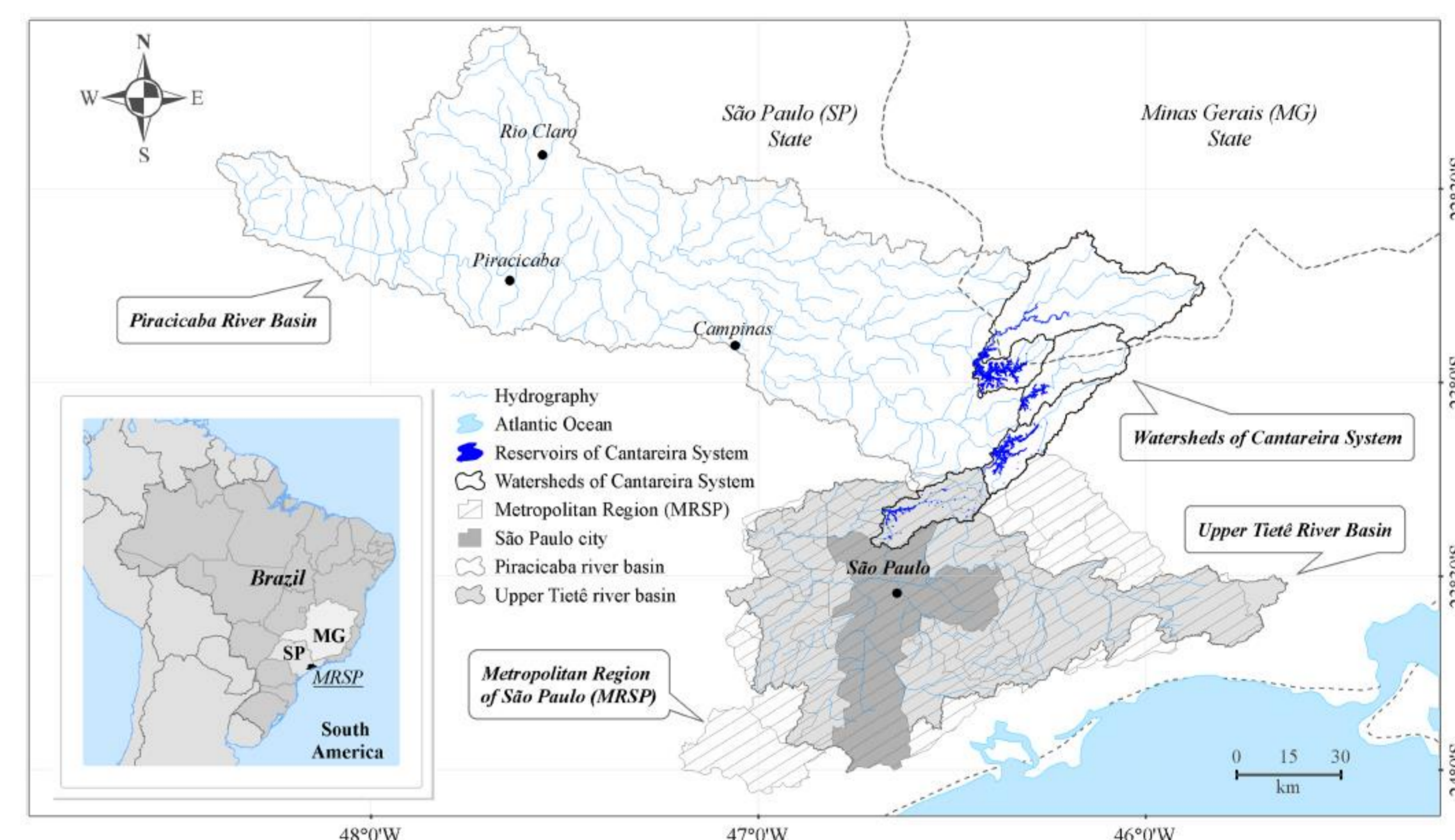
<sup>1</sup>Federal University of Mato Grosso do Sul, CxP. 549, Campo Grande, MS, 79070-900, Brazil. ✉ E-mail: [chiquito.gabriela@gmail.com](mailto:chiquito.gabriela@gmail.com)

## Water Security



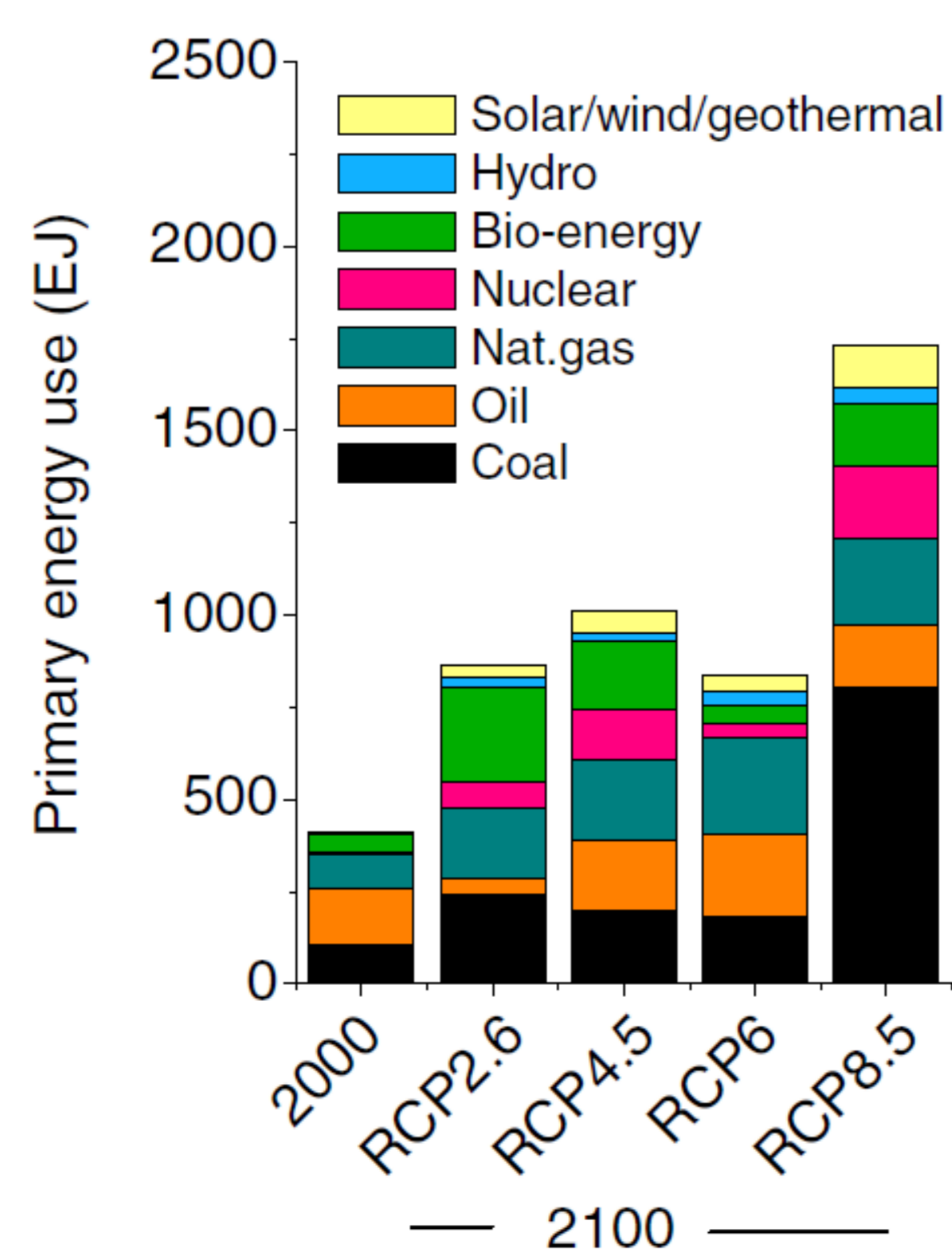
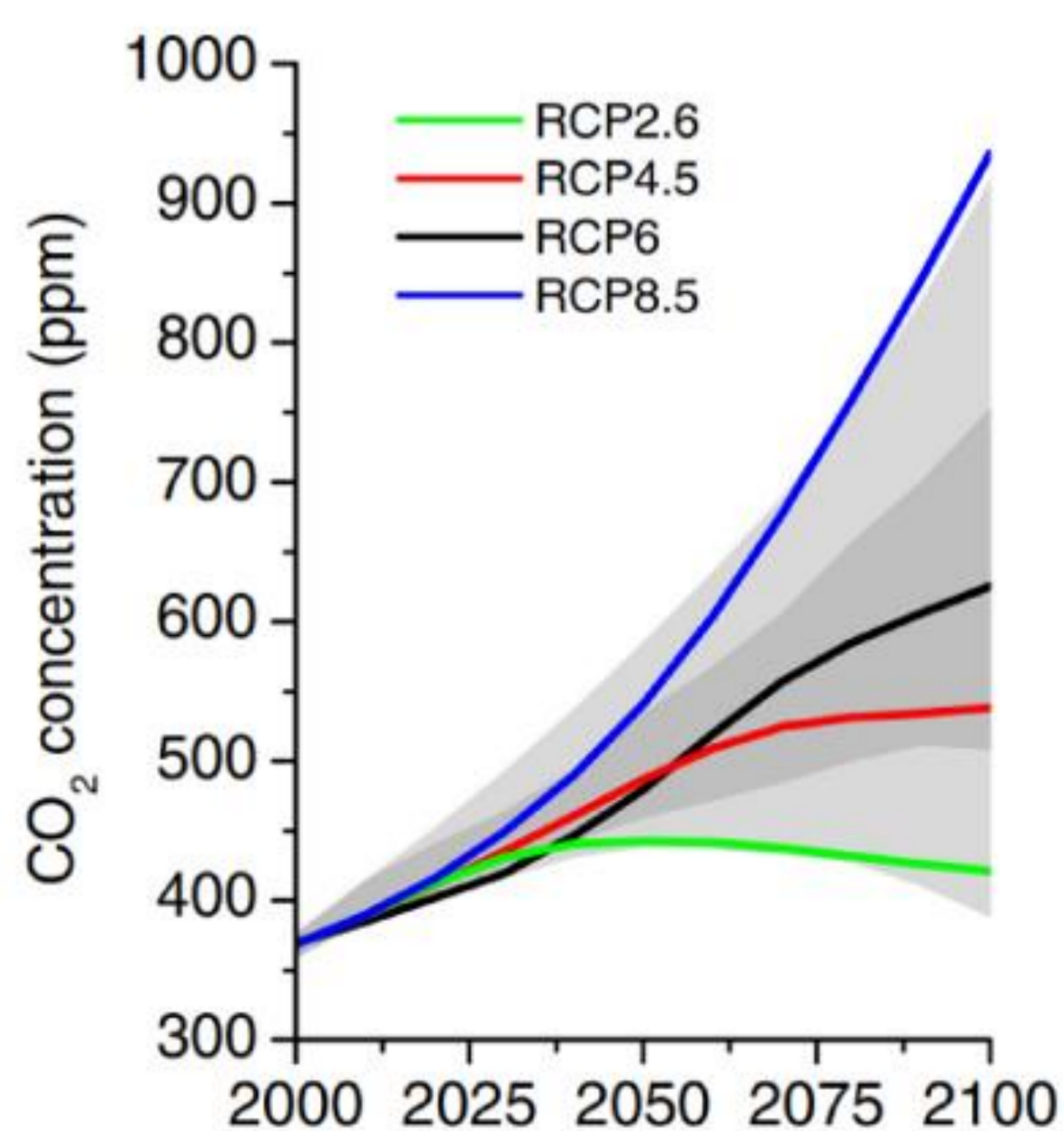
How to provide an overview of the impact on streamflow that may be useful to guide the basin's water security plans?

## Study Area – Cantareira Supply System

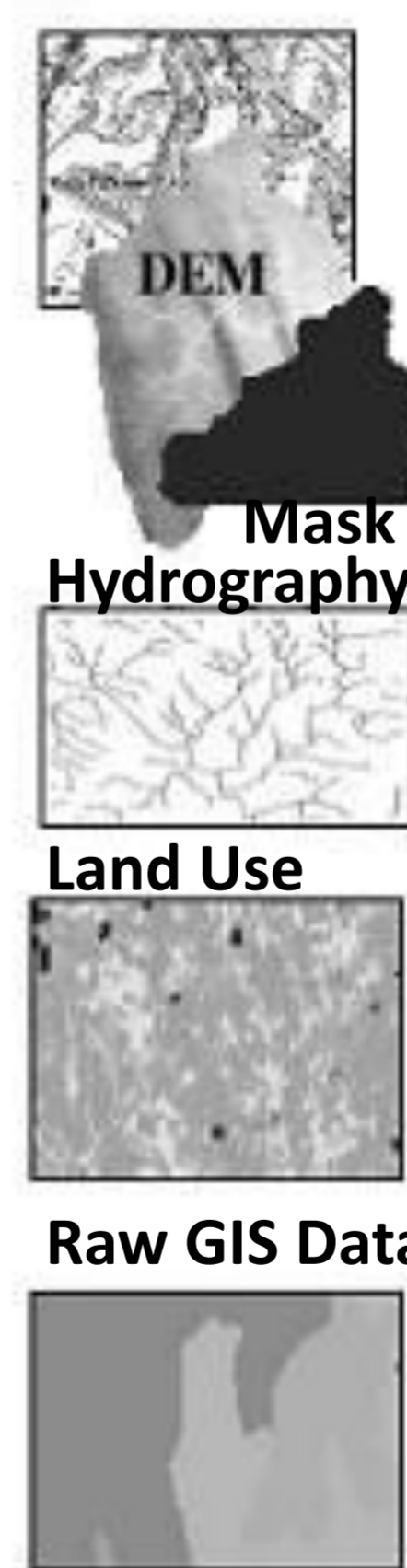


## Hydrological Modeling

## Climate Change – Projected Scenarios



Input Data



Time Series

x	y

Projected Scenarios of RCP 4.5 and RCP 8.5

