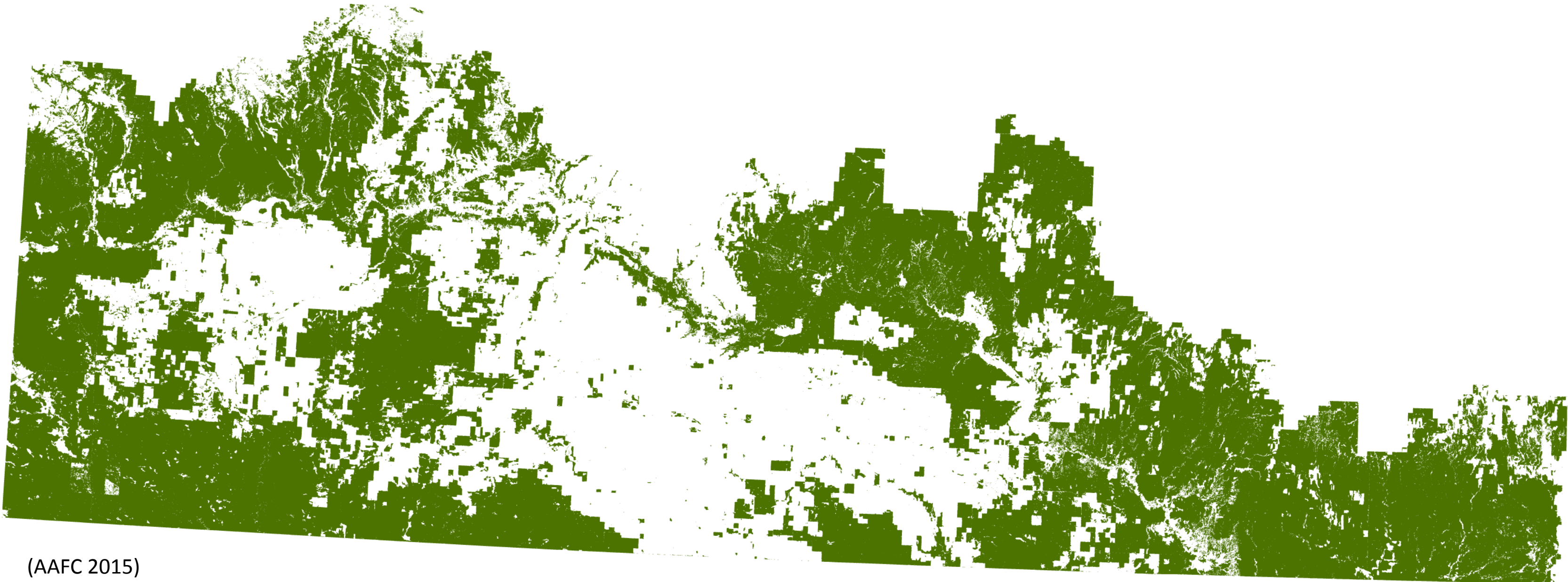


The social-ecological structure of sustainable landscapes in Canada

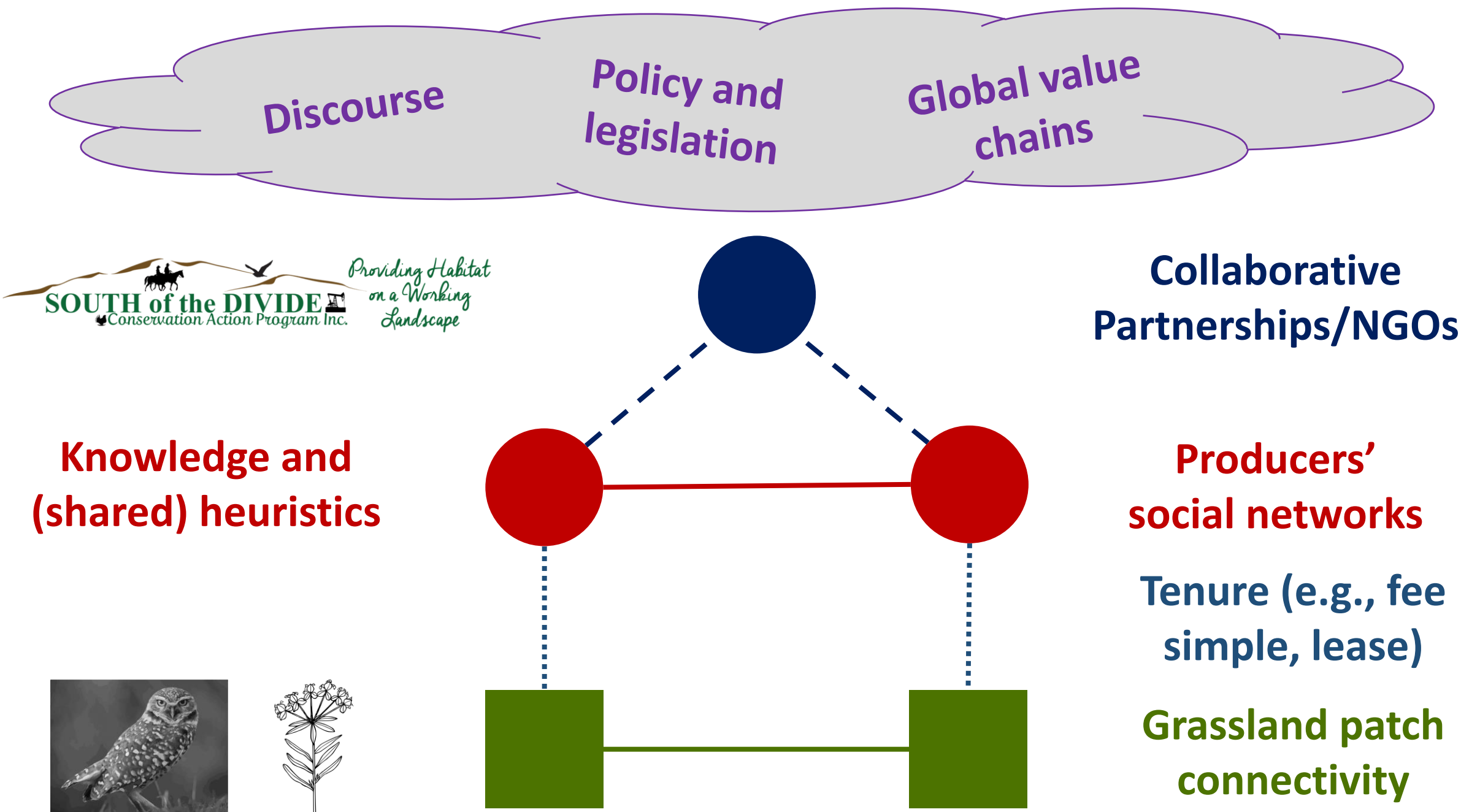
Jeremy Pittman, Liber Ero Postdoctoral Fellow
University of Waterloo, Canada



Fragmented landscape... but some of the
largest, intact pieces of native grass left



(AAFC 2015)



(Kininmonth et al. 2015; Guererro et al. 2015; Bodin et al. 2016)